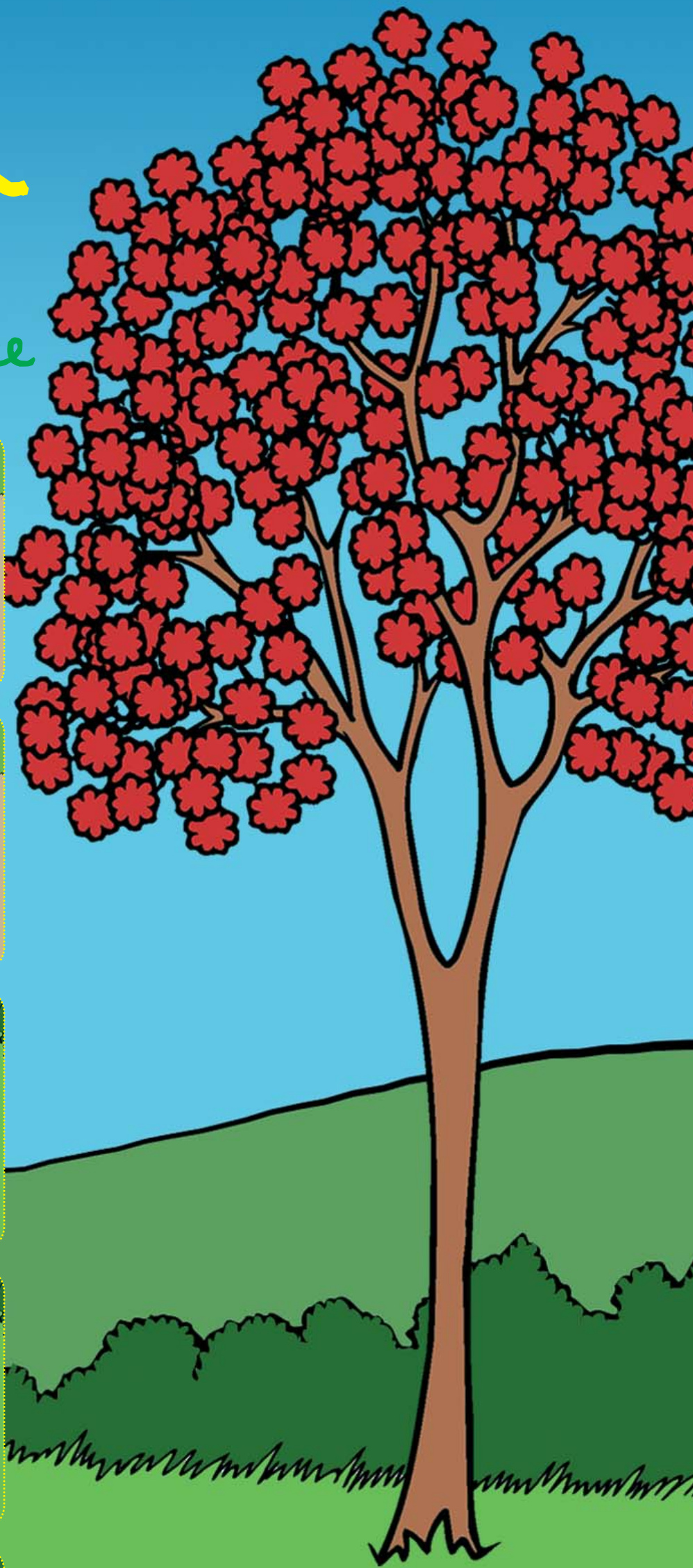
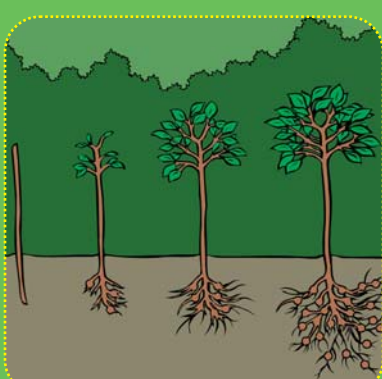
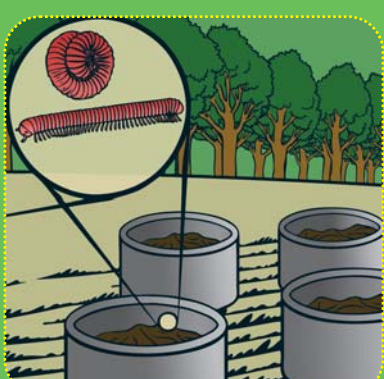
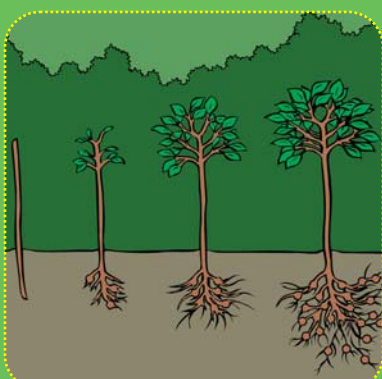
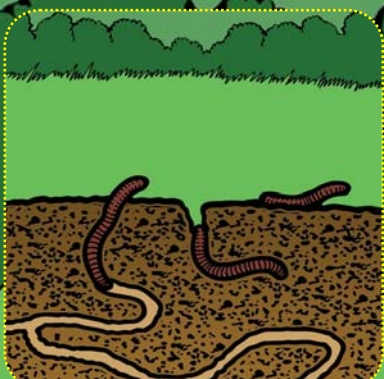
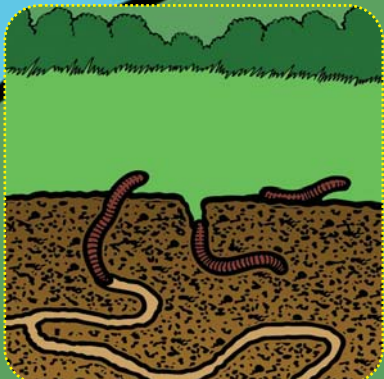
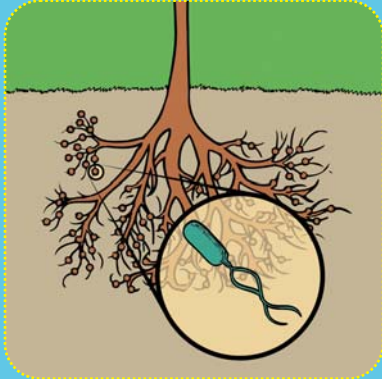
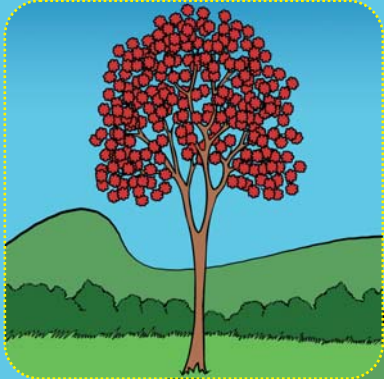
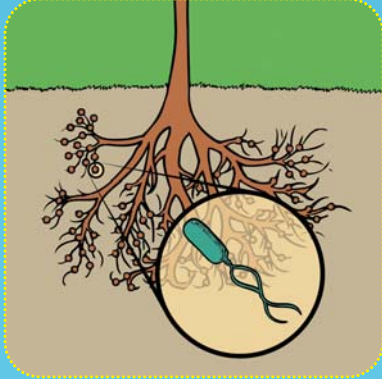
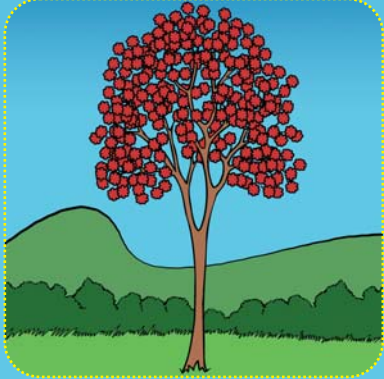


jogo da memória



Agroecologia

para gente que cresce



Na porteira do sítio onde Pedro mora há uma linda árvore chamada **Mulungu**. Através da série de cartilhas do projeto **Agroecologia para gente que cresce**, você pode conhecer um pouco mais sobre essa árvore e sobre os **rizóbios**, o **gongolo**, a **minhoca** e a **joaninha**. Agora é a hora de se divertir e de recordar essas histórias.

Bom jogo!